

PUMA ULTRA LITES | XLE LITES

PUMA

ULTRA LITES | XLE LITES

BY PALOMINO SINCE 1968



PUMA ULTRA LITE TRAVEL TRAILERS



12 FBX



16 BHX



16 DSX



16 QBX



18 RDX



18 SSX



PUMA ULTRA LITE TOY HAULER



187 TH

	12 FBX	16 BHX	16 DSX	16 QBX	18 RDX	18 SSX	187 TH
Hitch Weight (lbs)	6410	370	415	380	455	425	535
Axle Weight (lbs)	2400	2745	3270	2715	3315	3620	2965
UVW (lbs)	2839	3144	3714	3124	3799	4074	3529
GVWR (lbs)	3910	3870	4815	3880	4855	4825	4935
Cargo Capacity (lbs)	1070	725	1100	755	1055	750	1406
Exterior Length	18' 6"	21' 6"	22' 6"	21' 6"	23' 2"	22' 9"	22' 9"
Exterior Height w/AC	9' 11"	9' 11"	10' 1"	9' 11"	10' 1"	10' 1"	10' 1"
Water Heater Cap. (gal)	84"	84"	84"	84"	84"	84"	84"
Fresh Water Cap. (gal)	34	34	34	34	34	34	34
Black Water Cap. (gal)	30	30	30	30	30	30	30
Grey Water Cap. (gal)	30	30	30	30	30	30	30
Tire Size (in)	14"	14"	15"	14"	15"	15"	15"
Opt. Awning Size (ft)	10'	12'	14'	13'	14'	14'	14'

REFER TO BACK COVER FOR CHART DEFINITIONS.

PUMA XLE TRAVEL TRAILERS



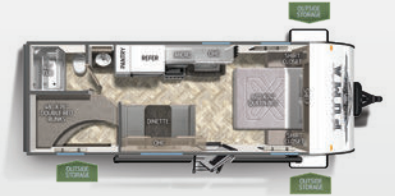
20 MBC ●



20 RLC



22 FKC ●



22 RBC ●



24 FBSC



25 BHSC ●



27 RBQC ●



30 DBSC ●●

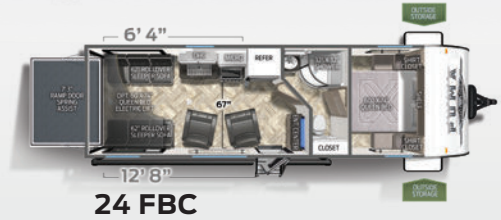
	20 MBC	20 RLC	22 FKC	22 RBC	23 BHC	24 FBSC	25BHSC
Hitch Weight (lbs)	450	600	685	435	600	556	650
Axle Weight (lbs)	3970	3570	4410	3770	4470	4252	5340
UVW (lbs)	4458	4208	5133	4243	5108	4808	6028
GVWR (lbs)	6000	5708	6633	5800	6608	6500	7528
Cargo Capacity (lbs)	1542	1500	1500	1557	1500	1654	1500
Exterior Length	26'	24' 10"	26'	26'	30' 1"	27' 6"	30' 5"
Exterior Height w/AC	10' 2"	10' 2"	11' 1"	10' 2"	10' 2"	10' 2"	11' 1"
Water Heater Cap. (gal)	96"	96"	96"	96"	96"	96"	96"
Fresh Water Cap. (gal)	43	43	43	43	43	43	43
Black Water Cap. (gal)	35	35	30	35	35	35	35
Grey Water Cap. (gal)	35	30	65	35	70	35	70
Tire Size (in)	14"	14"	14"	14"	14"	14"	15"
Awning Size (ft)	14'	15'	18'	10'	19'	16'	19'



PUMA XLE TOY HAULERS

	24 FBC	25 TFC	27 QBC	27 TSB	29 TSS
Hitch Weight (lbs)	775	845	1050	1145	1235
Axle Weight (lbs)	5248	5290	5542	6085	6580
UVW (lbs)	6061	6173	6630	7268	7853
GVWR (lbs)	7775	8873	9330	9995	11435
Cargo Capacity (lbs)	1714	2700	2700	2727	3582
Exterior Length	29' 9"	29' 9"	34' 1"	33' 7"	37' 6"
Exterior Height w/AC	12' 2"	12' 2"	12' 2"	12' 2"	12' 2"
Water Heater Cap. (gal)	96"	96"	96"	96"	96"
Fresh Water Cap. (gal)	43	43	43	43	43
Black Water Cap. (gal)	35	35	35	35	35
Grey Water Cap. (gal)	35	35	35	35	35
Tire Size (in)	15"	15"	15"	15"	15"
Awning Size (ft)	18'	14'	19'	21'	21'

REFER TO BACK COVER FOR CHART DEFINITIONS.



OUTSIDE KITCHEN OPTIONS

Available on select models.

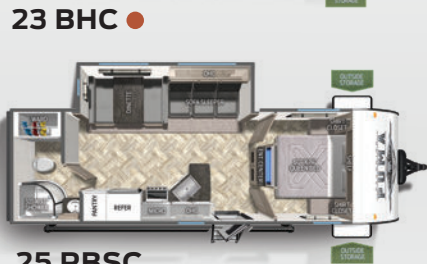
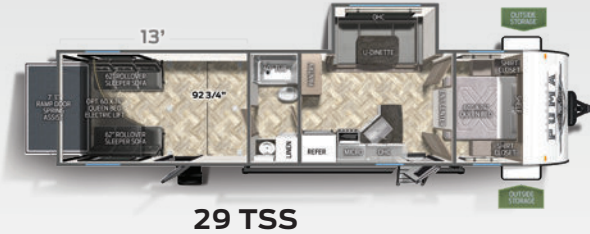
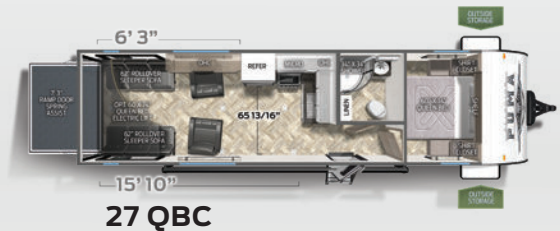
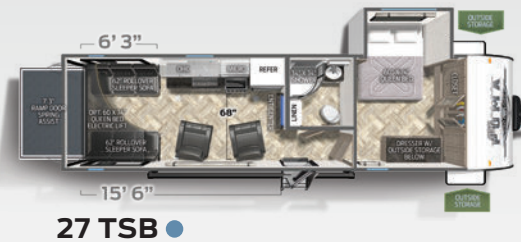
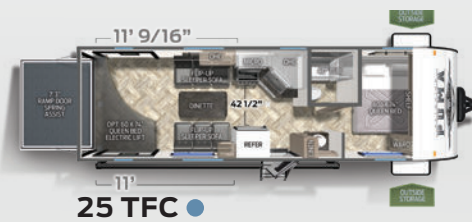
OUTSIDE KITCHEN W/ GRIDDLE



MINI KITCHEN W/ GRIDDLE



MICRO KITCHEN W/ GRIDDLE



25 RBSC	27RBQC	30 DBSC	31 BHSC
590	687	754	912
5070	5208	5546	6996
5698	5933	6338	7946
7300	7687	8000	9600
1602	1754	1662	1654
29' 8"	33' 2"	33' 7"	35' 6"
11' 1"	11' 1"	11' 1"	11' 1"
96"	96"	96"	96"
43	43	43	43
35	30	35	30
30	65	35	35
15"	15"	15"	15"
18'	21'	18'	21'



PUMA ULTRA LITE PACKAGES

ULTRA LITE PACKAGE (Required)

- Aluminum Solid Double Step
- Outside Shower
- Spare Tire & Carrier
- 13,500 BTU Non-Ducted A/C
- Power Tongue Jack
- AM/FM/Bluetooth Stereo
- 55 Amp Converter
- Front Diamond Plate
- Electric Awning
- Stainless Steel Microwave
- Stainless Range Hood
- 2 Exterior Speakers
- Back-up Camera Prep

ULTRA LEADER PACKAGE (Required)

- 11 Cu. Ft. 12V Residential Refrigerator
- Tub Surround
- Bedspread with Pillows
- Solar Prep
- TV Antenna
- Cable Hook-up
- Tinted Windows
- Night Shades
- Super Lube Axle
- Front & Rear Stabilizer Jacks
- Congoleum Linoleum
- Bath Skylight
- 6 Gal Gas/Electric DSI Water Heater
- LED Lighting
- TV Hook-up

PUMA ULTRA LITE STANDARD FEATURES

EXTERIOR

- Friction Hinged Radius Entry Doors
- Smooth, Radius Front Metal with Diamond Plate

- Large Front Frameless Window (Most models)
- Powder Coated Frames
- Super Lube Axles
- Tinted Safety Glass
- Clamp Ring Windows
- Pass-Thru Storage (Where applicable)
- AlphaPly Roofing Membrane (Limited lifetime warranty)
- Rain Gutters with Large Down Spouts
- Radius Baggage Doors
- Darco Wrapped Underbelly
- 5/8" Araucopy Plywood Floor Decking (25 Year manufacturer's limited warranty)
- 2" x 2" Flush Floor Joists on 12" Centers
- 1-30 Lb. Gas Bottle
- Schwintek Slide System with Manual Override (Small models)
- Clamp Ring Luggage Doors
- Back-up Camera Prep
- Solar Prep

INTERIOR

- 78" Interior Height
- 20,000 BTU Furnace
- USB Charging Ports
- Decorative Kitchen Backsplash
- Spice Rack (Kitchen)
- Divided Silverware Drawer
- Nickel Finish, Single Control Gooseneck Kitchen Faucet
- Glass Range Cover
- Built-in Knife Rack
- LED Ceiling Lights
- 30 Amp Converter with Battery Charger
- Jack Knife Sofa with Pull-down Center Drink Tray – Storage Underneath*
- Wood Medicine Cabinet with Mirrored Door*
- Power Vent in Bath
- 27" x 27" Radius Shower w/Door*

- 24" x 40" Tub/Shower*
- 12V Shower LED Light
- 60" x 74" Queen Beds (Most models)
- Upgraded Soft Teddy Bear Bunk Mats
- Shirt Closet in Front Bedrooms*
- Two Interior Decors
- Contemporary Hardware, Light & Bath Fixtures
- Dinette Seat Bases with Storage
- Residential Carpet with Pad
- Designer Window Treatments (Living room)

SAFETY FEATURES

- CO Detector
 - LP Leak Detector
 - Fire Extinguisher
 - Smoke Detector
- *Available on select models.

PUMA XLE LITE PACKAGES

VALUE LEADER PACKAGE (Required)

- Tub Surround
- Bedspread with Pillows
- TV Antenna with Cable Hook-up
- Tinted Windows
- Super Lube Axles
- Front & Rear Stabilizer Jacks
- Congoleum Linoleum
- Bath Skylight
- LED Lighting
- Bedroom TV Hook-up
- WiFi Prep
- Solar Prep

ELITE PACKAGE (Required)

- Electric Awning
- Oven & Range Hood
- Stainless Steel Microwave
- AM/FM/Bluetooth Stereo
- 2 Exterior Speakers

- Outside Shower
- Spare Tire
- Front Diamond Plate
- 13,500 BTU Ducted A/C
- 6 Gal Gas/Electric Water Heater
- Night Shades
- Aluminum Solid Steps
- 11 Cu. Ft. Residential

ELECTRIC POWER PACKAGE (Optional)

- 4 Electric Stabilizer Jacks • 3500 lb Electric Tongue Jack

PUMA XLE LITE STANDARD FEATURES

EXTERIOR

- Friction Hinged Radius Entry Doors
- Smooth, Radius Front Metal with Diamond Plate
- Large Front Frameless Window (Most models)
- Powder Coated Frames
- Super Lube Axles
- Tinted Safety Glass
- Clamp Ring Windows
- Pass-Thru Storage (Where applicable)
- AlphaPly Roofing Membrane (Limited lifetime warranty)
- Rain Gutters with Large Drop Spouts
- ABS Automotive Style Fender Skirts
- Radius Baggage Doors
- Clamp Ring Luggage Doors
- Darco Wrapped Underbelly
- 5/8" Araucopy Plywood Floor Decking (25 Year manufacturer's limited warranty)
- 2" x 3" Flush Floor Joists on 12" Centers
- 2-20 Lb. Gas Bottles
- Rack & Pinion Electric Slide System with Manual Override (Large models)
- Schwintek Slide System with Manual Override

- (Small models)
- Back-up Camera Prep
- Solar Prep

INTERIOR

- 80" Interior Height (Large models)
- 78" Interior Height (Small models)
- USB Charging Ports
- Floor Ducted Heat (Most models)
- Decorative Kitchen Backsplash
- Spice Rack (Kitchen)
- Divided Silverware Drawer
- Nickel Finish, Single Control Gooseneck Kitchen Faucet
- Undermount Stainless Steel Sink
- Glass Range Cover
- Built-in Knife Rack
- LED Ceiling Lights
- 55 Amp Converter with Battery Charger
- Jack Knife Sofa with Pull-down Center Drink Tray – Storage Underneath (Most models)
- Wood Medicine Cabinet with Mirrored Door
- Power Vent in Bath
- Glass Shower Door*
- 12V Shower LED Light
- 60" x 74" Queen Beds
- Upgraded Soft Teddy Bear Bunk Mats
- Shirt Closet in Front Bedrooms
- Two Interior Decors
- Satin Nickel Hardware, Light & Bath Fixtures
- Square Dinette Seat Bases with Storage
- Residential Carpet with Pad
- Designer Window Treatments (Living room)

SAFETY FEATURES

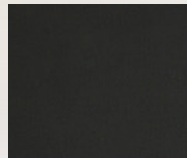
- CO Detector
 - LP Leak Detector
 - Fire Extinguisher
 - Smoke Detector
- *Available on select models.

PALOMINO
PUMA

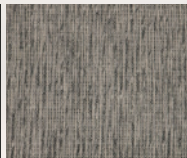
Puma by Palomino, a Division of Forest River, Inc.
2551 Century Drive • Goshen, IN 46528
www.palominorv.com

YOUR **PUMA** DEALER

PUMA DÉCOR OPTIONS



GRANITE



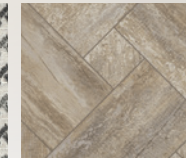
CAFE LATTE



SLATE



FLOORING



FREE MEMBERSHIP
to Forest River Owners' Group

www.forestriverfrog.com



Learn More

Scan this barcode using a QR Reader on your smart phone to learn more about Forest River.



A Berkshire Hathaway company.

Specification Definitions :: GVWR (Gross Vehicle Weight Rating) - is the maximum permissible weight of the unit when fully loaded. It includes all weights, inclusive of all fluids, cargo, optional equipment and accessories. For safety and product performance do NOT exceed the GVWR. // **GAWR (Gross Axle Weight Rating)** - is the maximum permissible weight, including cargo, fluids, optional equipment and accessories that can be safely supported by a combination of all axles. // **UVW (Unloaded Vehicle Weight)*** - is the typical weight of the unit as manufactured at the factory. It includes all weight at the unit's axle(s) and tongue or pin and LP Gas. The UVW does not include cargo, fresh potable water, additional optional equipment or dealer installed accessories. *Estimated average based on standard build optional equipment. // **CCC (Cargo Carrying Capacity)**** - is the amount of weight available for fresh potable water, cargo, additional optional equipment and accessories. CCC is equal to GVWR minus UVW. Available CCC should accommodate fresh potable water (8.3 lbs per gallon). Before filling the fresh water tank, empty the black and gray tanks to provide for more cargo capacity. ** Estimated average based on standard build optional equipment // Each Forest River RV is weighed at the manufacturing facility prior to shipping. A label identifying the unloaded vehicle weight of the actual unit and the cargo carrying capacity is applied to every Forest River RV prior to leaving our facilities. The load capacity of your unit is designated by weight, not by volume, so you cannot necessarily use all available space when loading your unit. // All information contained in this brochure is believed to be accurate at the time of publication. However, during the model year, it may be necessary to make revisions and Forest River, Inc., reserves the right to make all such changes without notice, including prices, colors, materials, equipment and specifications as well as the addition of new models and the discontinuance of models shown in this brochure. Therefore, please consult with your Forest River dealer and confirm the existence of any materials, design or specifications that are material to your purchase decision. Litho. U.S.A. FOR 1766 P&W: 2021.02.11