

CEDAR CREEK CHAMPAGNE EXTENDED STAY FIFTH WHEELS



THE SMART CHOICE FOR THE EXPERIENCED RV'ER





38EBS

RESIDENTIAL INTERIOR FEATURES:

- Ashley Grey Cabinetry
- Congoleum Flooring
- Shaw Carpeting
- Safe Night Accent Lighting
- Power Theater Seating with USB Ports
- Hide-a-Bed Sofa (some models)
- Insignia Appliances
- 50" TV with Swing Arm
- Solid Surface Counter Tops
- Stainless Steel Under Mounted Sinks
- One-piece Back Splash
- Self-Closing Drawer Guides
- Hidden Hinges
- Dimmer Switches Throughout Including Slides
- Day/Blackout Roller Shades
- One-piece Residential Shower
- Porcelain Toilet
- Residential King Mattress
- Flip-top Dresser Storage
- 32" TV in the Bedroom
- Washer / Dryer Prep that allows side-by-side installation
- King Campground WiFi Extender
- Whisper Quiet Air Conditioners in the Living Room and Bedroom



THE SMART CHOICE FOR THE EXPERIENCED RV'ER



CEDAR CREEK

CHAMPAGNE

THE ADVANTAGE

Step up to a Champagne Edition fifth wheel, to experience a higher level of comfort. Champagne is designed with a simple philosophy in mind – luxury above all else. Tasteful, high sheen Ashley Grey cabinetry compliments residential appliances for an inviting interior that sets a warm tone for an extended stay.



38EBS This front bedroom model includes a comfortable seating area with plenty of natural light and storage.



RESIDENTIAL CONVENIENCES



20 Cu. ft. residential stainless steel electric refrigerator with ice-maker and dedicated inverter.



The Cuisinart® Private Reserve® Wine Cellar quietly and efficiently maintains the ideal storage temperature, (between 39° to 68°F), to preserve the quality of your favorite wines. This thermoelectric cooling system is touchpad controlled, has a stainless finish and soft interior lighting.

38EL



The 38EL dream kitchen features an Insignia 24" freestanding gas range with a glass door, a stainless steel 30" microwave oven, and solid surface countertops. There's plenty of storage and counter space, a Cuisinart wine cellar, plus many more residential features for gourmet cooks. High sheen Ashley Grey cabinetry and an infinity lighting fixture above the island adds a touch of elegance. Champagne extended stay fifth wheels are perfect for all season family camping. Shown in Mink decor.



Clean up is quick and easy with stainless steel undermount sinks and this single handle, pull-out faucet with sprayer.



A stainless steel dishwasher is optional on select models.





Cedar Creek fifth wheels are prewired for an optional Furrion rear camera or four camera security system.

KING



The standard KING Wi-FiMAX router/range extender can be configured to connect to available networks and devices with password access.



Truma™ AquaGo Instant Water Heater – A constant, endless supply of hot water, for showering, rinsing, and hand washing. A 12 Gallon Gas/Electric water heater is optional.



Heated front storage compartment provides over 100 cu. ft. of storage, and includes an extra vacuum port for outside clean-ups.



Clean, Simple Interfaces

This coach is powered by Firefly Integrations with advanced electrical automation.

Firefly specializes in developing simple interfaces for total system control.



FIREFLY
INTEGRATIONS

Imagination • Innovation • Integration
www.fireflyint.com



OUTDOOR PARTY CENTER

This party slide is only 20" wide, and tucks nicely into most fifth wheel front storage compartment(s). It packs a whopping punch with a 50" hidden TV on a double lift, a fold-up countertop with hidden storage, a 110V mini refrigerator and a Suburban gas griddle on a steel slide out tray.



Optional side-by-side washer and dryer

DECOR



MINK

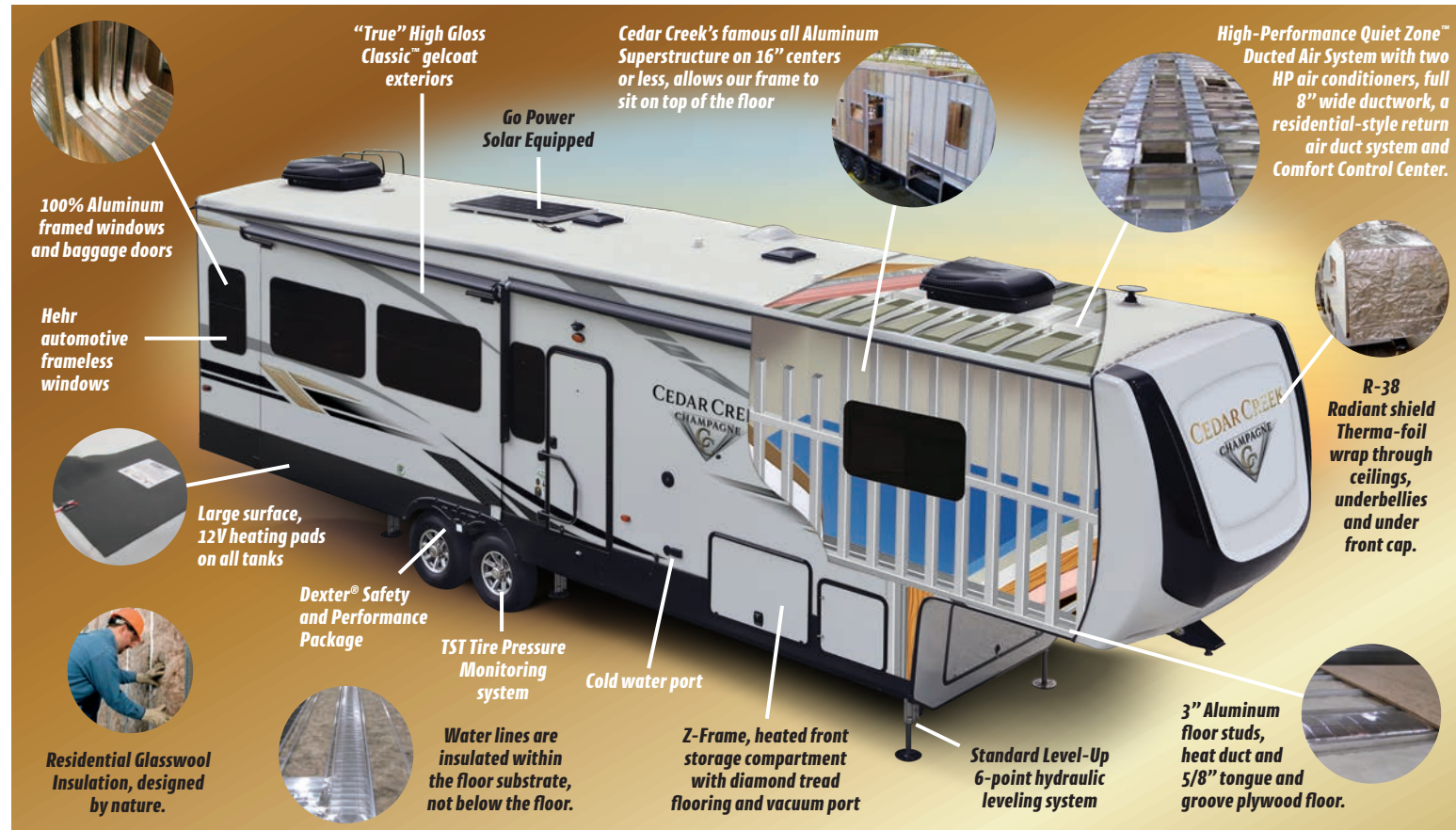



BISCOTTI




LINEN

CEDAR CREEK CONSTRUCTION – FOR YEARS OF CAREFREE CAMPING






Cold room tested to 0°F with standard insulation and heating pads that allow all season camping.



R-11
SIDE WALLS



R-45
FLOORS



R-40
CEILING




INDUSTRY LEADING TIRE PRESSURE MONITORING SYSTEM

Monitor your tires from the Driver's seat. Real time tire temperature and pressure readings are transmitted directly to our display. The system alerts you in the event of a tire puncture or other gradual pressure loss, sudden tire temperature increase, or rapid deflation of the tires. Increased awareness brings increased safety, tire life and fuel economy.



INTERACTIVE MOBILE MANUALS

Download our Cedar Creek mobile app or visit our dynamic online manual to enhance your ownership experience. These interactive options provide incredible ease and insight into use, maintenance and enjoyment of your Cedar Creek product. Ranging from "How-To" videos, pictures and illustrations of various components, systems and features, to fully searchable content and downloadable PDFs for individual component owner's manuals, answers are always just a click away. View the online manual at www.forestriverinc.com/cedarcreek/ownersmanuals, or download our FREE app from the App Store or Google Play!



ADVANTAGE PACKAGE

(Mandatory Features)

- "True" High Gloss Gelcoat Exterior
- Cedar Creek's All Aluminum Superstructure
- Automatic 6-point Hydraulic Leveling System
- 2" Bike Hitch Receiver
- Solid Surface Countertops
- Molded, Motorhome style Rear Fiberglass Cap
- 20 Cu. Ft. Stainless Steel Refrigerator with 1000W Inverter with Icemaker
- Stainless 20 Cu. Ft. French, Double Drawer Refrigerator with Inverter and Ice Maker
- Quick Disconnect, Exterior, LP Gas Connection
- Heated Front Storage Compartment
- Deluxe Hide-a-Bed sofa
- Dual Pane Windows
- Upgraded Luxury King Mattress
- Insignia 24" Freestanding Gas Range
- TST Tire Pressure Monitor System
- Pet Leash Latch

CONVENIENCE PACKAGE

- "True" Gelcoat, Painted Front Cap
- Sliding, Battery Trays
- MORryde®, 5 Tier, "Step Above" Entry Stairs
- Intra-Vac Central Vacuum System with Front Storage Port
- (2) Whisper Quiet, Ducted, Air Conditioners with Dual Zone Control and Cold Air Returns
- Extra Wide, 32" Entry Door
- Congoleum® Vinyl Flooring in Living Room and Bedroom
- 55" 4K, TV in the Living Room with Swing Arm
- Washer/Dryer Prep with a New Front Closet Redesign for a Side-by-side Washer/Dryer Option
- Cadet® Heater with Fan in the Bedroom
- Truma On Demand Hot Water Heater
- Keyless Entry System
- Power Theater Seating
- USB Ports in Kitchen and Bedroom
- King WiFi Router/Range Extender
- Solar Prep
- (2) Variable Speed Power Fans with Rain Sensor Override
- Washer/Dryer Prep
- Total Unit Control with Vegatouch® Panel and Firefly Dimmer Switches that Include Wireless Connectivity to Your Phone
- Slam Latch Baggage Doors
- Prep for (4) Camera Security System

STANDARD FEATURES

Exterior

- DEXTER® Safety and Performance Package
 - Nev-R-Adjust® Brakes are Always Properly Adjusted for Improved Stopping Power in Half the Distance
 - E-Z Flex™ Rubber Equalization System with 1/2" Link Plates and (8) Grease Zerk Per Side
 - E-Z Lube®, Heavy Duty Axles with Bronze Bushings in Shackles
- 17.5" "H" Rated Tires on 8,000 lb. Dexter® Axles
- 21,000 Lb. Rhino Hitch
- Electric Awnings with LED Night Lighting
- 50 Amp Service
- 65 Amp Power Converter
- Rear Ladder
- Exterior Compartment with 32" TV
- Doorside, Cold Water Port
- 8000# Axles with 17.5, "H" Rated Tires



- Power Cord Reel
- Go Power® Solar Panel with Battery
- Interior**
 - Central Docking Station
 - Satellite and Cable Hook-ups Located in Docking Station Wired into the Living Room and Bedroom
 - Flip-top Dresser Storage
 - Illuminated Ceiling Fan
 - Valances
 - Shaw® R2X Stain and Soil Resistant Carpeting in Living Room Slide
 - Crown Molding Complimenting all Overhead Cabinets
 - 48" Fiberglass Residential Shower with Large Seat, Upgraded Shower Head, Wrap Around Storage Ledges and Triple Sliding Glass Doors
 - 12V Battery Disconnect
 - Walk-in Front Closet
 - Infinity Light
 - Shaw® Carpet on the Dining Slide

- Ashley Grey, High Sheen Cabinet Doors and Drawers with Hidden Hinges
- Stainless Steel 30" Microwave Oven
- Pantry with Full Extension Drawer Guides
- Dining Table with (4) Chairs (2 Folding, 2 Non-folding with Leaf Extension)
- New Bathroom Redesign
- 36" Fireplace with Thermostat
- Champagne LED Lighting Package
- 32" TV in the Bedroom
- One-piece, Marble Cast, Kitchen Backsplash
- Safety & Support**
 - Carbon Monoxide Detector
 - LP Gas Detector
 - Smoke Detector
 - One-year of SafeRide RV Roadside Assistance
 - Membership to the Forest River Owner's Group (F.R.O.G.)

OPTIONS

Exterior Options

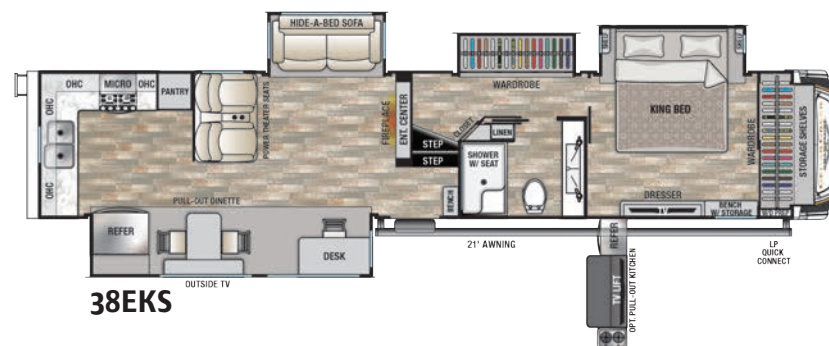
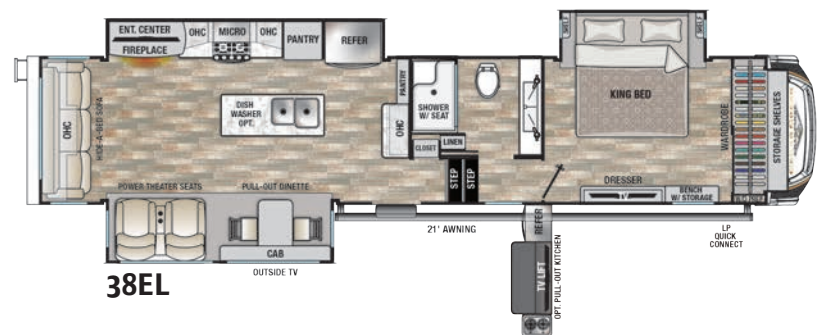
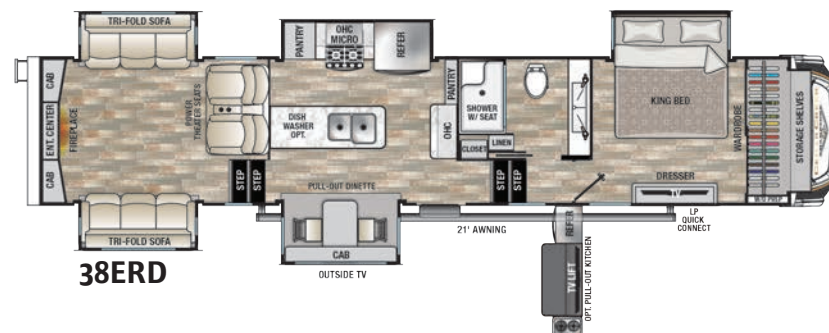
- Full Body Paint Package
- Thule Slide Room, Power Awning (N/A 38ERD)
- LP Generator Prep Only
- 5.5 Onan Marquis Gold LP Generator with Generator Prep
- Whisper Quiet Third A/C with Power Management System
- Heat Pump on Main Air Conditioner
- Slide Room Awning Toppers
- Cedar Creek Party Center

Interior Options

- Shaw Carpeting in the Living Room with Rebond
- Shaw Carpeting in the Bedroom with Rebond (N/A 38EKS)
- 18 Cu. Ft. Gas/Electric Stainless Steel Refrigerator
- Splendide Front Loading, Washer and Dryer
- Fisher & Paykel Dishdrawer™, Stainless Steel Dishwasher in Island
- 30" Stainless Steel Convection Oven/Microwave

- 110V Bedroom Refrigerator in Front Closet
- Furniture Options**
 - Luxury 10" Queen Mattress IPO King
- Miscellaneous Options**
 - King Dish Satellite System with (2) Receivers and (3) Viewing Areas
 - 21,000 Lb. Trailair Air Ride Hitch Coupler
 - Wireless Rear Camera Observation System
 - (4) Camera Safety and Security System
 - 12 Gallon Gas/Electric Hot Water Heater

CHAMPAGNE FLOORPLANS



MODEL	38EBS	38ERD	38EL	38EKS
GVWR	18790 lbs.	18000 lbs.	18000 lbs.	TBD
Hitch Weight	2790 lbs.	2415 lbs.	2710 lbs.	TBD
UVW	14364 lbs.	14124 lbs.	14429 lbs.	TBD
CCC	4426 lbs.	3876 lbs.	3571 lbs.	TBD
Exterior Length	41' 4"	40' 11"	41' 7"	TBD
Exterior Height	13' 5"	13' 5"	13' 5"	13' 5"
Exterior Width	96"	96"	96"	96"
On-Demand Fresh Water*	57 gal.	57 gal.	57 gal.	57 gal.
Gray Water	82 gal.	82 gal.	80 gal.	82 gal.
Black Water	41 gal.	41 gal.	40 gal.	41 gal.
Awning Size	21 ft.	21 ft.	21 ft.	21 ft.

*On-Demand, Tankless Water Heater

GVWR (Gross Vehicle Weight Rating) - is the maximum permissible weight of the unit when fully loaded. It includes all weights, inclusive of all fluids, cargo, optional equipment and accessories. For safety and product performance do NOT exceed the GVWR.

GVWR (Gross Axle Weight Rating) - is the maximum permissible weight, including cargo, fluids, optional equipment and accessories that can be safely supported by a combination of all axles.

UVW (Unloaded Vehicle Weight)* - is the typical weight of the unit as manufactured at the factory. It includes all weight at the unit's axle(s) and tongue or pin and LP Gas. The UVW does not include cargo, fresh potable water, additional optional equipment or dealer installed accessories.

*Estimated Average based on standard build optional equipment.

CCC (Cargo Carrying Capacity)** - is the amount of weight available for fresh potable water, cargo, additional optional equipment and accessories. CCC is equal to GVWR minus UVW. Available CCC should accommodate fresh potable water (8.3 lbs per gallon). Before filling the fresh water tank, empty the black and gray tanks to provide for more cargo capacity.

**Estimated average based on standard build optional equipment.

Each Forest River RV is weighed at the manufacturing facility prior to shipping. A label identifying the unloaded vehicle weight of the actual unit and the cargo carrying capacity is applied to every Forest River RV prior to leaving our facilities. The load capacity of your unit is designated by weight, not by volume, so you cannot necessarily use all available space when loading your unit.

All information contained in this brochure is believed to be accurate at the time of publication. However, during the model year, it may be necessary to make revisions and Forest River, Inc., reserves the right to make all such changes without notice, including prices, colors, materials, equipment and specifications as well as the addition of new models and the discontinuance of models shown in this brochure. Therefore, please consult with your Forest River dealer and confirm the existence of any materials, design or specifications that are material to your purchase decision.

©2020 Cedar Creek, a Division of Forest River, Inc., a Berkshire Hathaway company. All Rights Reserved. 10/20

CEDAR CREEK CHAMPAGNE FULL BODY PAINT



SAPPHIRE

OPAL

ONYX

Full Body Paint will turn heads wherever you travel. These bold new exterior options are offered along with our Standard Graphics.



Whether you are coming or going, this full body paint with molded rear cap is designed to impress.

CEDAR CREEK CHAMPAGNE

THE SMART CHOICE FOR THE EXPERIENCED RV'ER

FOREST RIVER INC. CEDAR CREEK DIVISION

501 Hawpatch Road • Topeka, IN 46571 • Phone: 260-593-2404

Parts & Service Phone: 260-593-4013 • On The Web at: www.forestriverinc.com/cedarcreek



WWW.KOACARECAMPS.ORG

Fighting Cancer + Making Memories

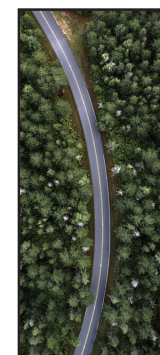
FREE MEMBERSHIP
to Forest River Owners' Group

www.forestriverfrog.com

YOUR CEDAR CREEK DEALER



PRE-DELIVERY INSPECTION FACILITY
20,000 square feet of quality assurance. The bare essentials for a premium product. This state-of-the-art facility gives immediate daily feedback to production for quality assurance in every unit built.



**24/7 EMERGENCY
ROADSIDE ASSISTANCE
WITH VEHICLE PURCHASE***

TOWING
JUMP-STARTS
TIRE CHANGES
FLUID DELIVERY
LOCKOUT
SERVICE

WINCH-OUT
MOBILE MECHANIC
TECHNICAL
SUPPORT
DEALER LOCATOR
SERVICES



*VALID FOR 1 YEAR FROM DATE OF PURCHASE



Learn More
Scan this barcode using
a QR Reader on your
smart phone to learn
more about Forest River.



A Berkshire Hathaway company.